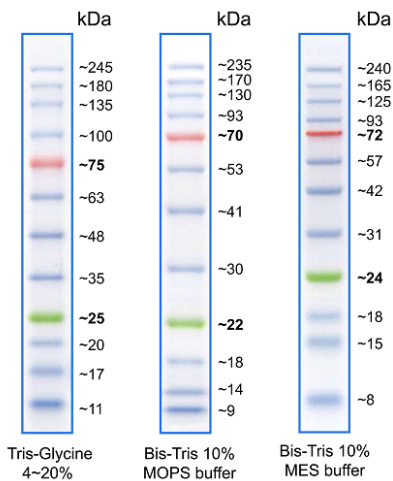




## BlueEye Prestained Protein Marker (10-245kDa)

10 - 245 kDa prestained protein ladder  
Ready-to-use protein ladder

Cat. No.	Amount
PS-104	2 x 250 µl



### Applications:

- Visualization of protein migration during SDS-polyacrylamide gel electrophoresis
- Verification of protein transfer onto membranes after Western blotting
- Approximate sizing of proteins on SDS-polyacrylamide gels and Western blots

### Description:

The BlueEye Prestained Protein Marker is a three-color protein standard with 12 pre-stained purified proteins. Proteins are covalently coupled with a blue chromophore except for two reference bands, one green at 25 kDa and one red one at 75 kDa respectively, when separated on SDS-PAGE (Tris-glycine buffer).

### Recommended Load:

3-5 µl Protein Molecular Weight Marker per lane

**For general laboratory use.**

**Shipping:** shipped on gel packs

**Storage Conditions:** store at -20 °C

Short term storage (up to 1 month) at 4 °C possible.

**Shelf Life:** 12 months

**Purity:** > 95 % (SDS-PAGE)

**Form:** liquid (supplied in 20 mM Tris-phosphate pH 7.5 , 2 % SDS, 0.2 mM DTT, 3.6 M urea and 15 % glycerol)