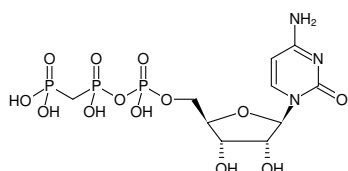


**CppCp**

(CMPPCP)

Cytidine-5'-[(β,γ)-methylene]triphosphate, Sodium salt

Cat. No.	Amount
NU-254	5 mg



Structural formula of CppCp

For general laboratory use.**Shipping:** shipped on gel packs**Storage Conditions:** store at -20 °C

Short term exposure (up to 1 week cumulative) to ambient temperature possible.

Shelf Life: 12 months after date of delivery**Molecular Formula:** C₁₀H₁₈N₃O₁₃P₃ (free acid)**Molecular Weight:** 481.18 g/mol (free acid)**Exact Mass:** 481.01 g/mol (free acid)**Purity:** ≥ 95 % (HPLC)**Form:** solid**Color:** white to off-white**Spectroscopic Properties:** λ_{max} 271 nm, ε 9.0 L mmol⁻¹ cm⁻¹ (Tris-HCl pH 7.5)